

## PLC 程序下载步骤

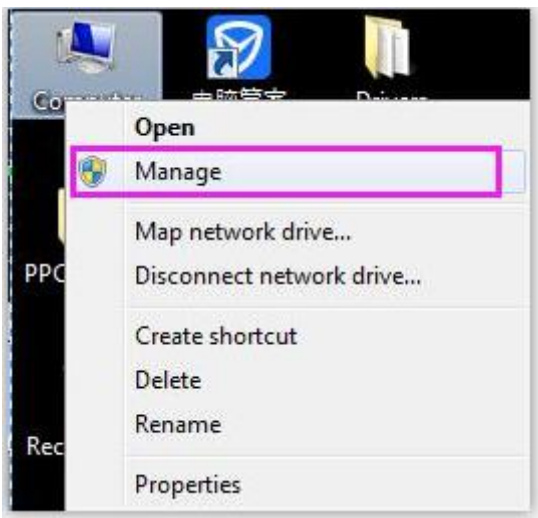
### Steps of downloading PLC program

1、PLC 通过如下图所示串口线与电脑连接。

Connect PLC with computer through PLC programming port as below:

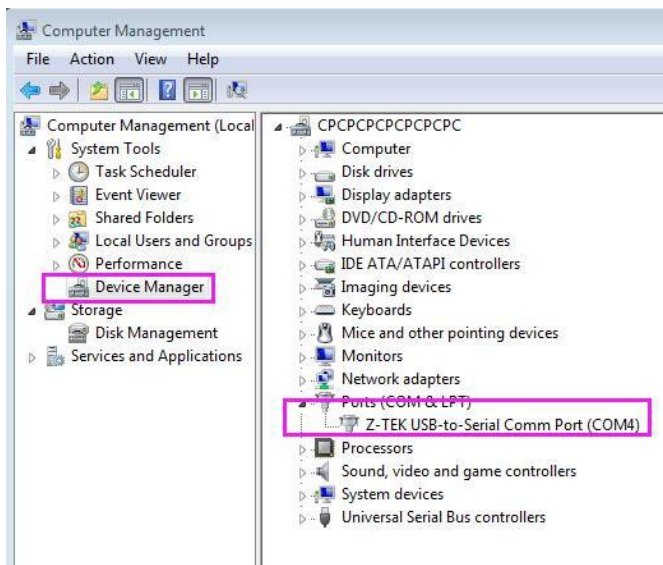


2、右键我的电脑，选择【管理】。如下图所示 Right click 【My computer】， select 【Manage】



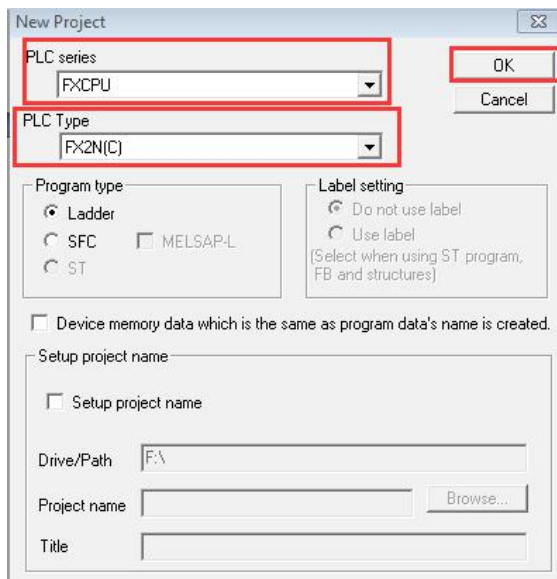
3、弹出如下所示对话框，选择【Device Manager】，在【Ports(COM&LPT)】处查看 PLC 与电脑连接所使用的串口号。本例子中使用的为 COM4

The below dialog box will pop up, click 【Device Manager】 - 【Ports(COM&LPT)】， check the serial port which connect PLC and computer .



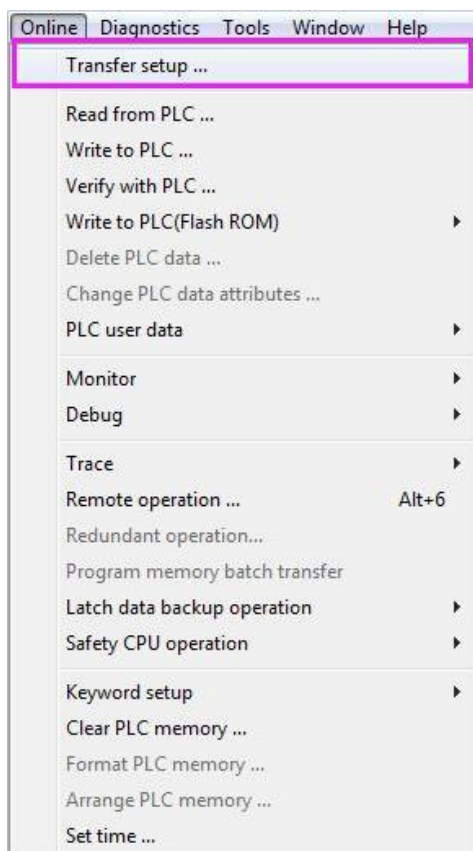
4、打开 GX Developer ,选择正确的【PLC series】【PLC Type】,然后点击【OK】按钮。如下图所示:

Open GX Developer , select the corresponded 【PLC series】【PLC Type】, then click 【OK】. Please refer to the below image:



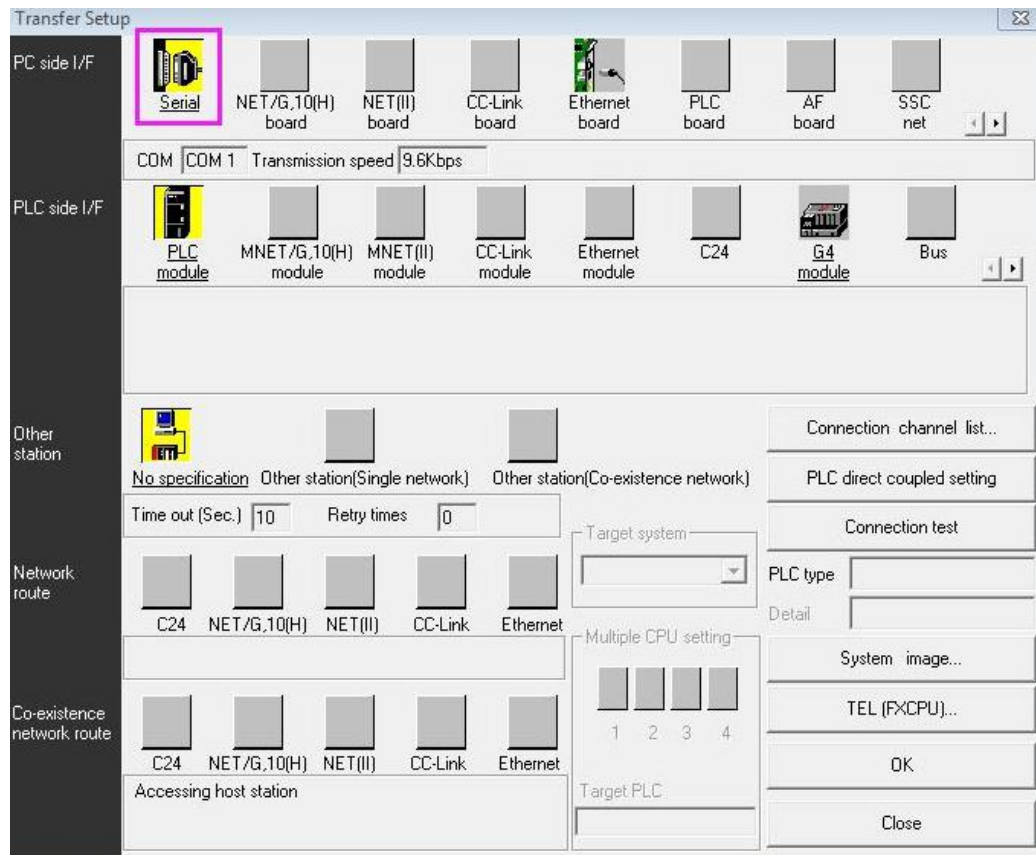
5、在菜单栏选择【Online】->【Transfer setup】,进行 PLC 与电脑通信测试。如下图所示

In Menu 【Online】->【Transfer setup】, test the communication of PLC and computer as below:



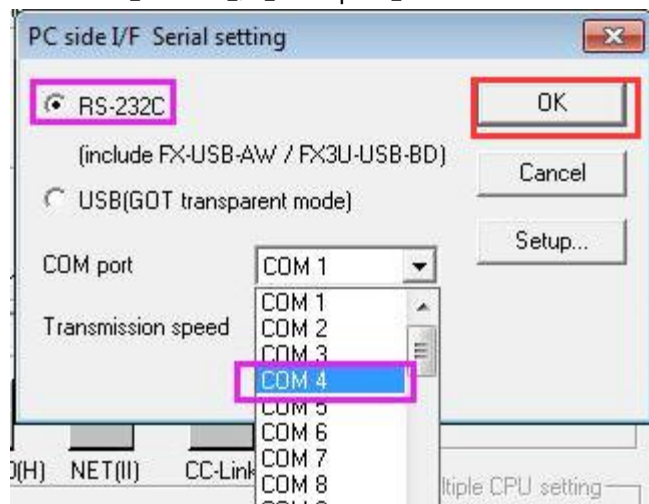
6、在弹出的设置对话框中，快速双击【Serial】，如下图所示：

Double click 【Serial】 quickly



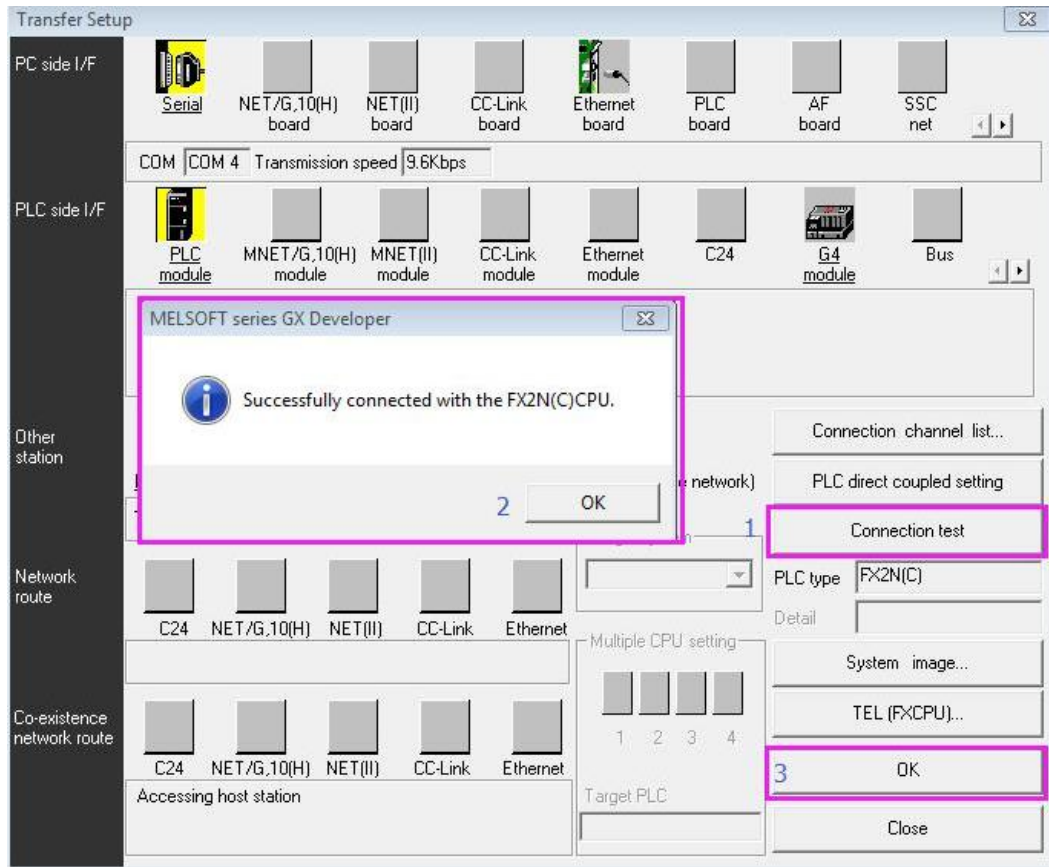
7、在选择【RS-232】，【COM port】 = COM4。完成选择后点击【OK】。如下图所示：

Select 【RS-232】，【COM port】 = COM4 and then click 【OK】 .



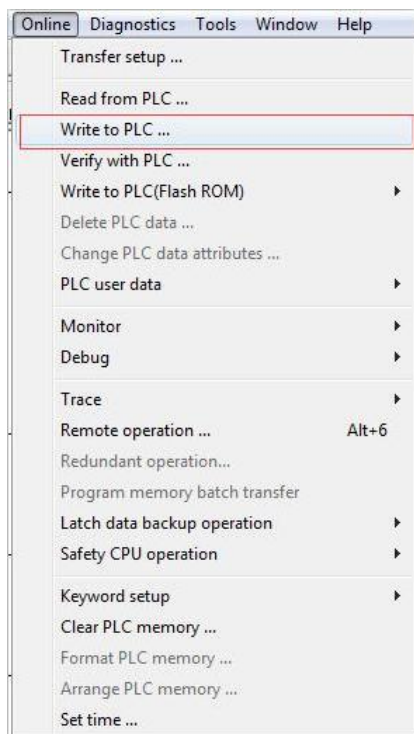
8、完所 COM 选择后，点击【Connection test】按钮，弹出通信成功后，点击【OK】。如下图所示：

After select COM, click 【Connection test】，after it prompt communicating successfully, click 【OK】 as below image:



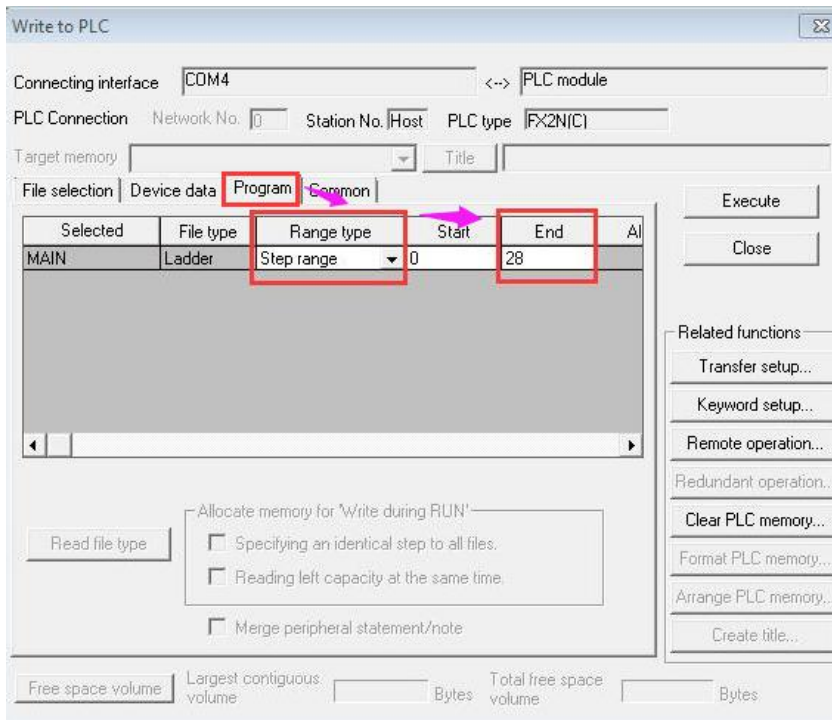
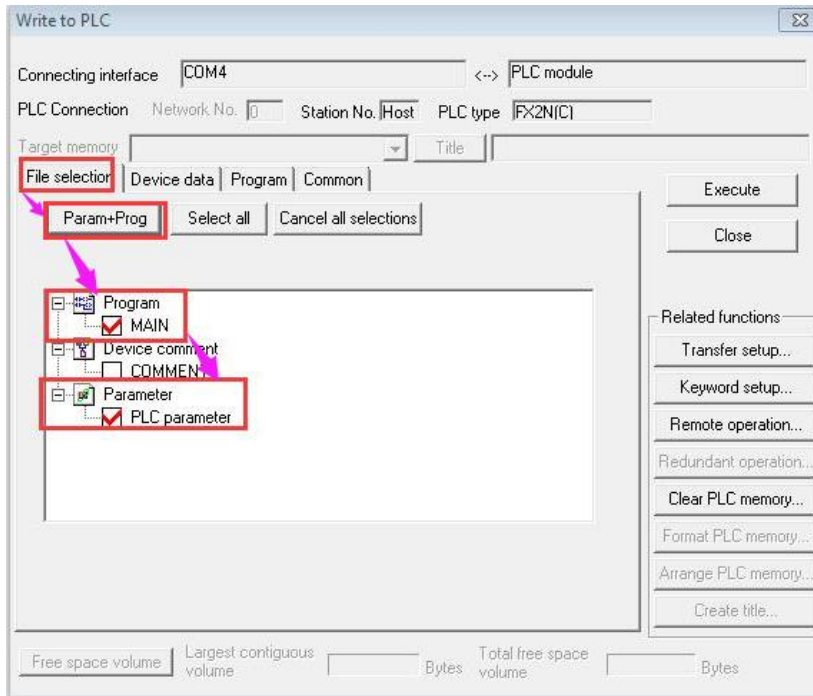
9、完成 PLC 程序编写后，选择【Online】->【Write to PLC】。如下图所示：

After completed PLC program, select 【Online】->【Write to PLC】 as below image:



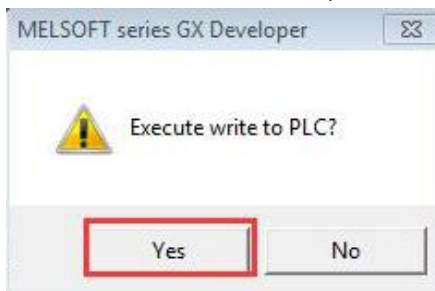
10、在弹出的对话框中，对需下载的 PLC 程序进行设置，如下图所示

In the prompted dialog box, set PLC program which is needed to download, as below image:



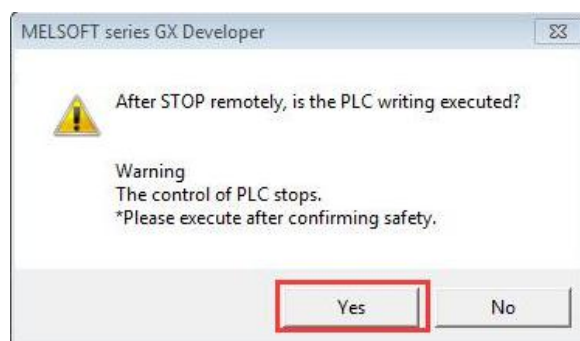
11、完成选择后，点击【Execute】按钮。会弹出如下所示对话框，点击【Yes】按钮。

Then click 【Execute】 , the below dialog box will pop up, click 【Yes】

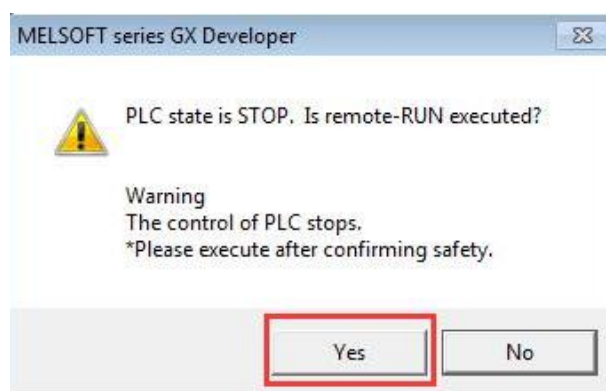
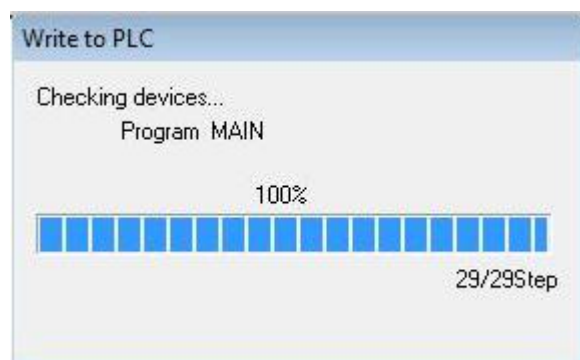


12、弹出如下所示对话框，点击【Yes】按钮。

The below dialog box will pop up, click 【Yes】



13、进行下载：Downloading

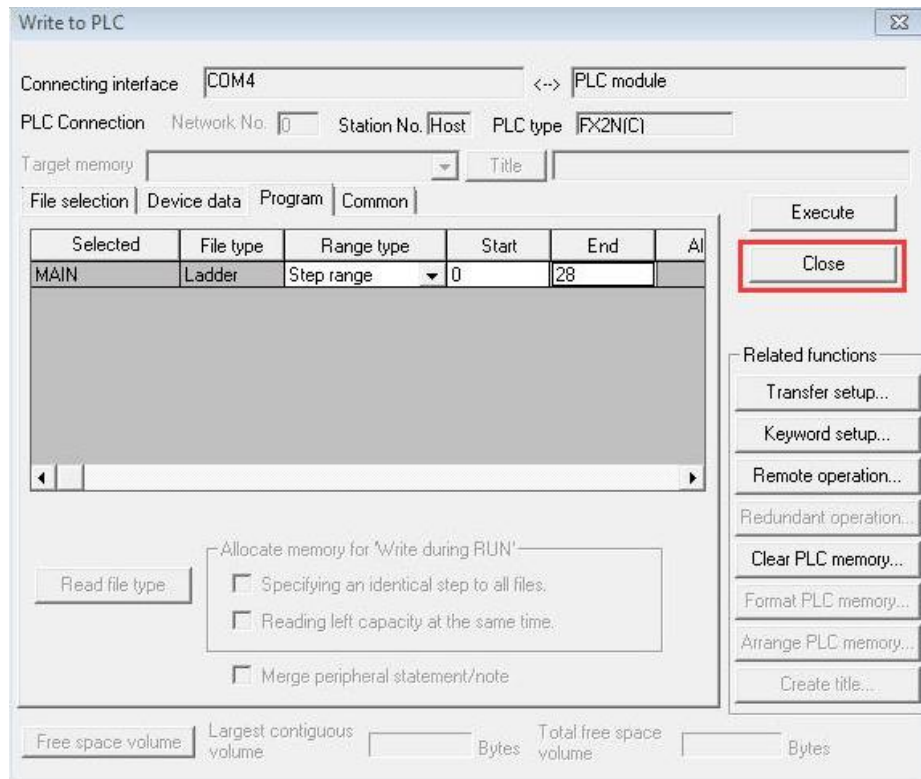


14、如上图弹出 Completed。表示程序成功写入 PLC。点击【OK】按钮。

Completed prompts as above image, that means the program is successfully write into PLC. Then click 【OK】.

15、完成写入后，点击【Close】按钮，关闭【Write to PLC】对话框即可。

Then click **【Close】** to close dialog box of **【Write to PLC】** .



16、PLC 程序下载成功后，你可以选择 **【Online】** -> **【Monitor】** -> **【Monitor mode】** 对程序进行监控。如下图所示：After PLC program successfully download, select **【Online】**->**【Monitor】** -> **【Monitor mode】** to monitor the program. Please refer to below image.

